

LICKING TOWNSHIP
STEERING COMMITTEE
MEETING # 2



AGENDA

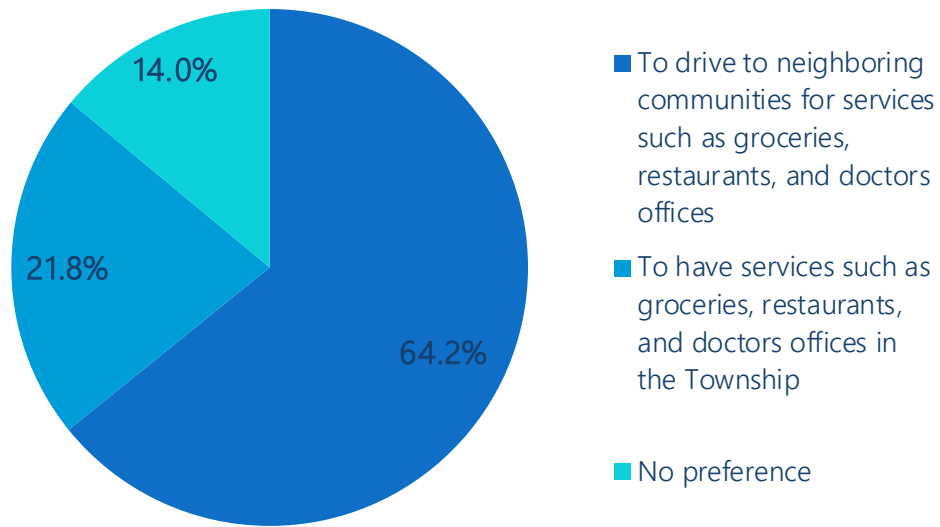
- Review of Existing Conditions
Report and Community Survey
- Goals and Action Steps
Brainstorming
- Next Steps

COMMUNITY SURVEY RESULTS

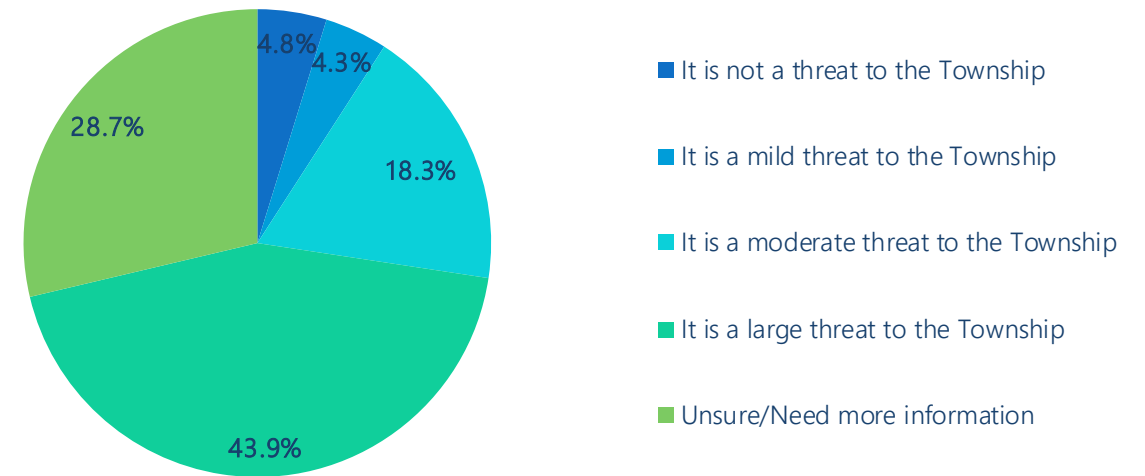
- 245 Responses
- Almost 2/3 of respondents were 55+
- Almost 55% of respondents had been in the Township 20+ years
- Over 88% of respondents said the quality of life in Licking Township was good or better

PREFERENCES AND PERCEPTION OF ANNEXATION

Q7 Would you prefer:

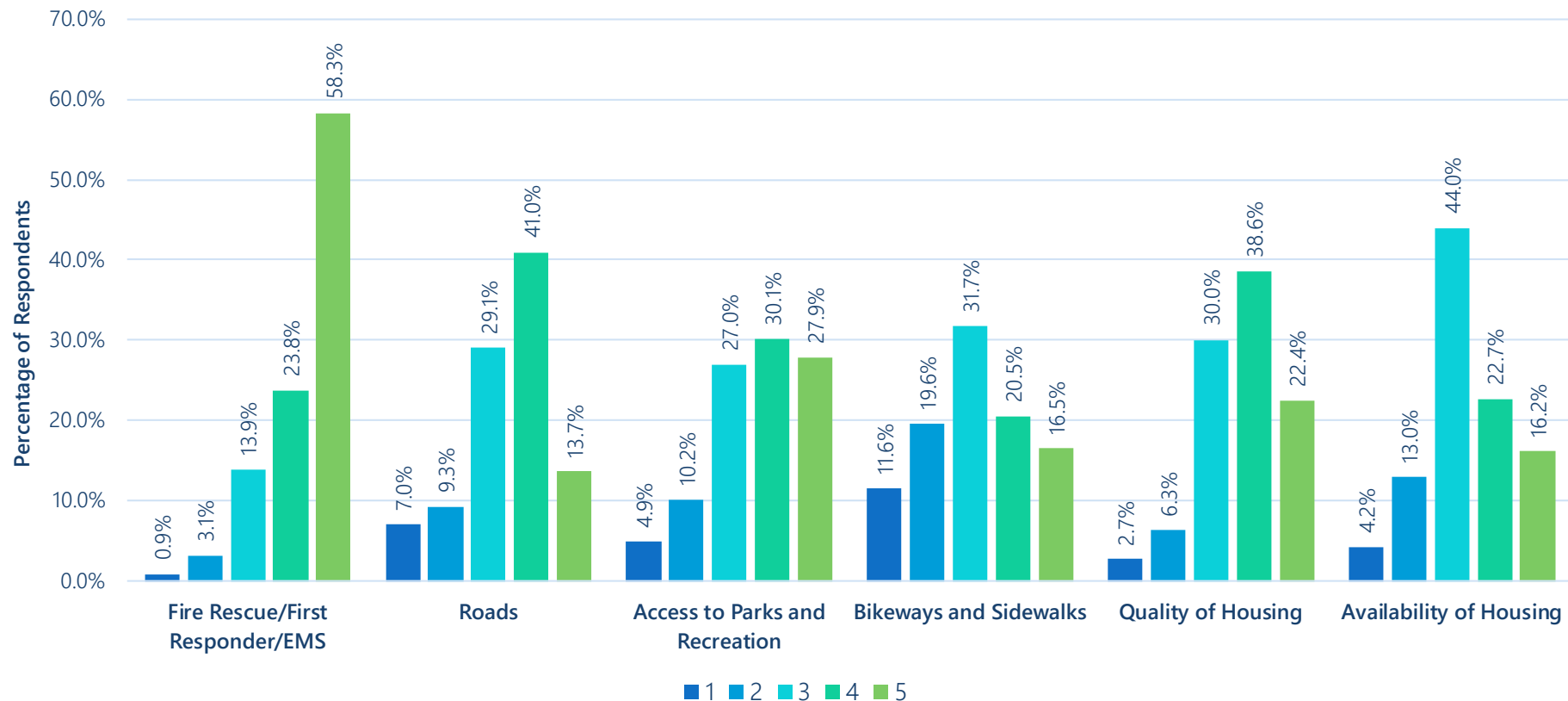


Q8 What is your perception of potential annexation?



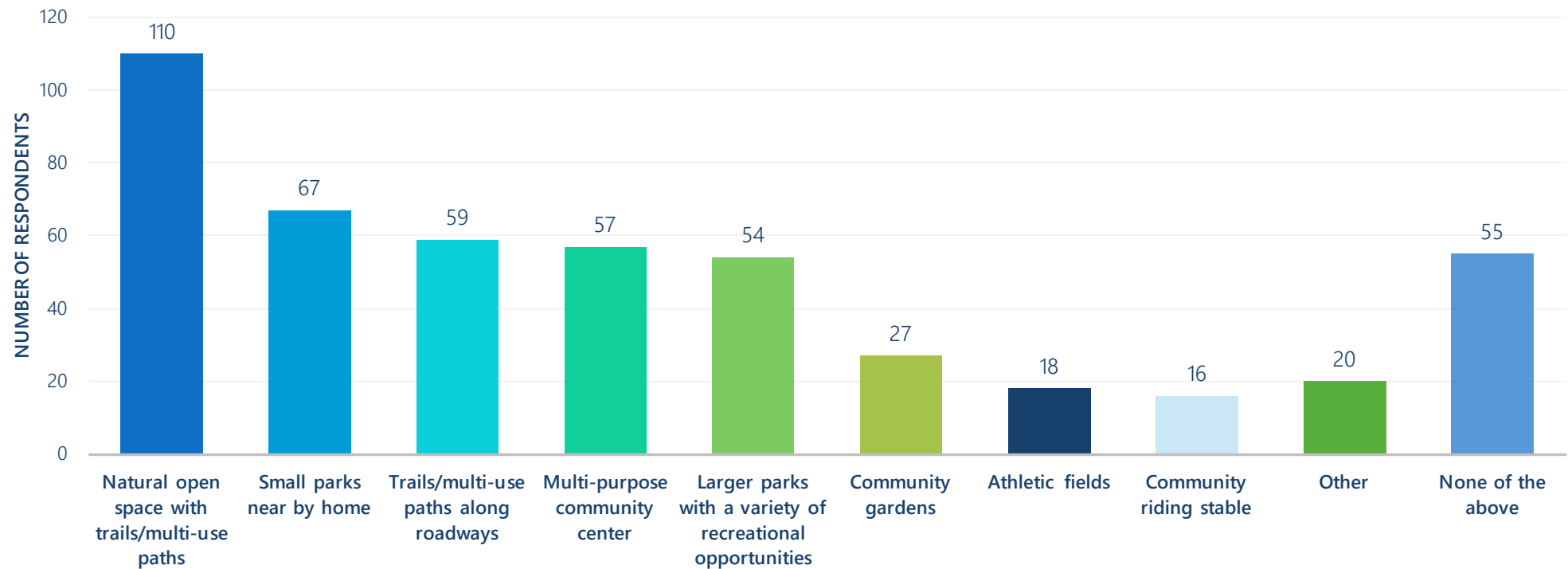
SERVICES

Q9 Please rank the quality of each service below, with "1" meaning the service is inadequate and "5" meaning the service is top quality.



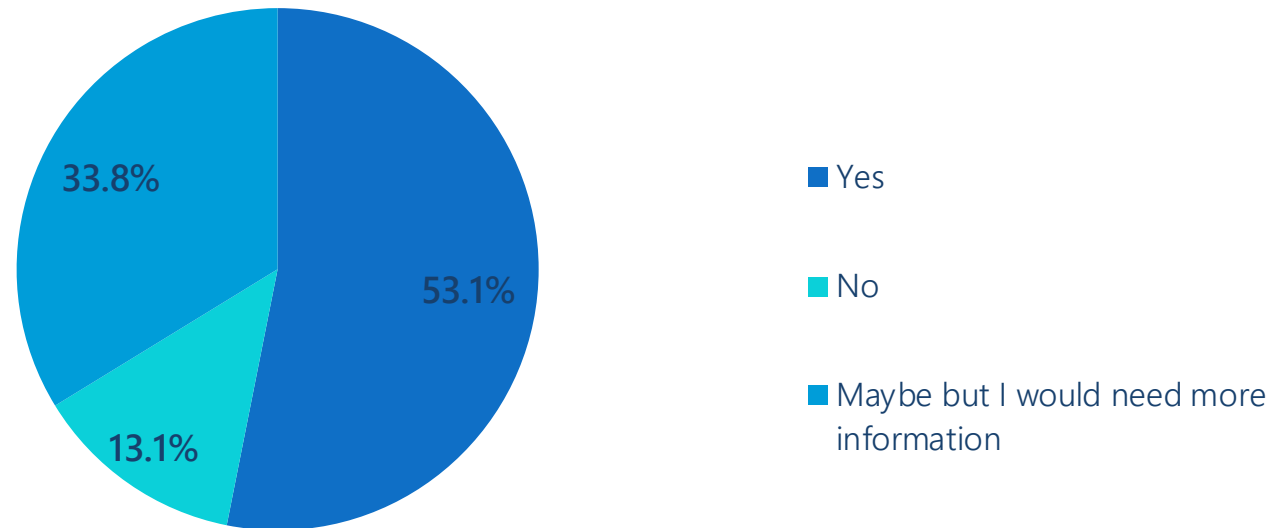
RECREATION

Q17 What recreation facilities would you use if they were available in Licking Township? (Check all that apply)



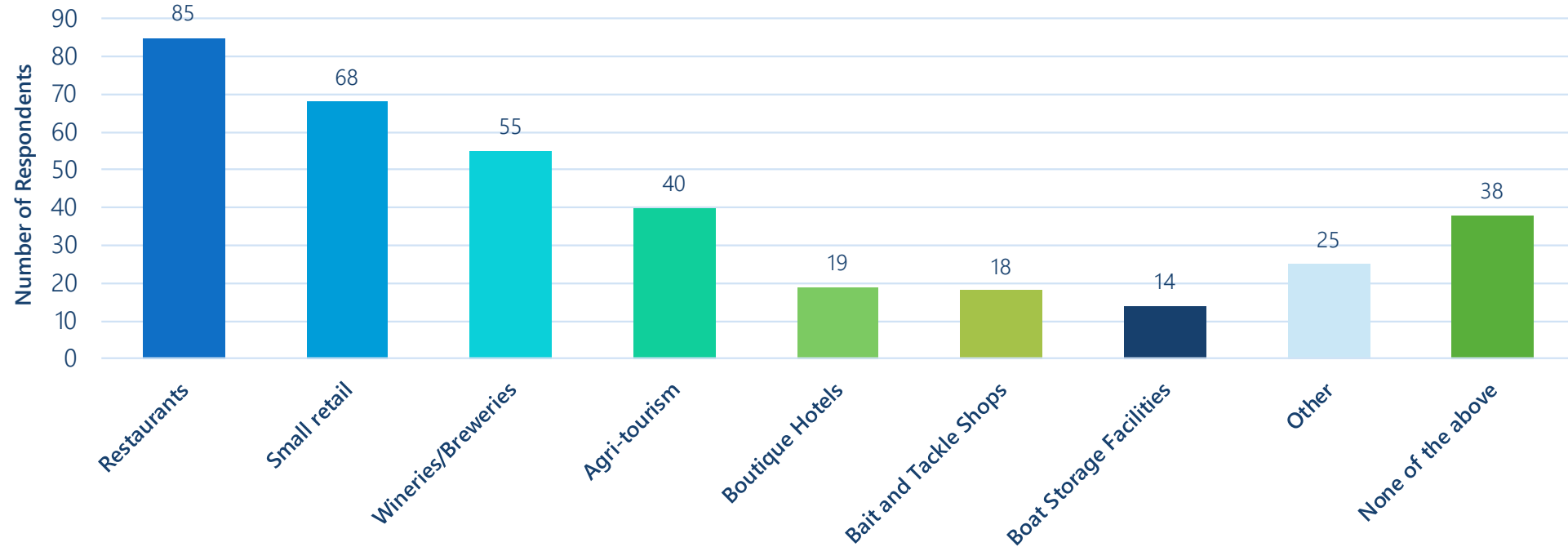
RECREATION

Q15 Would you want to have a multi-use path that connects Licking Township to Buckeye Lake?



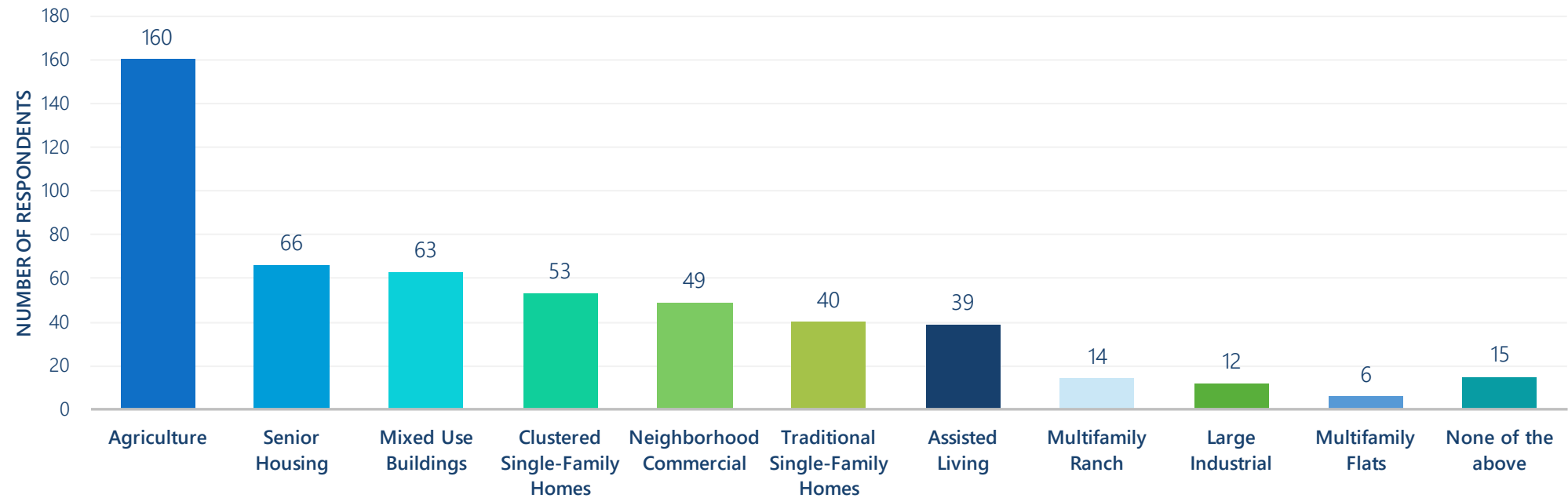
DEVELOPMENT

Q16 What types of businesses that support the tourism industry would you want to see in key areas of Licking Township? Select all that apply.



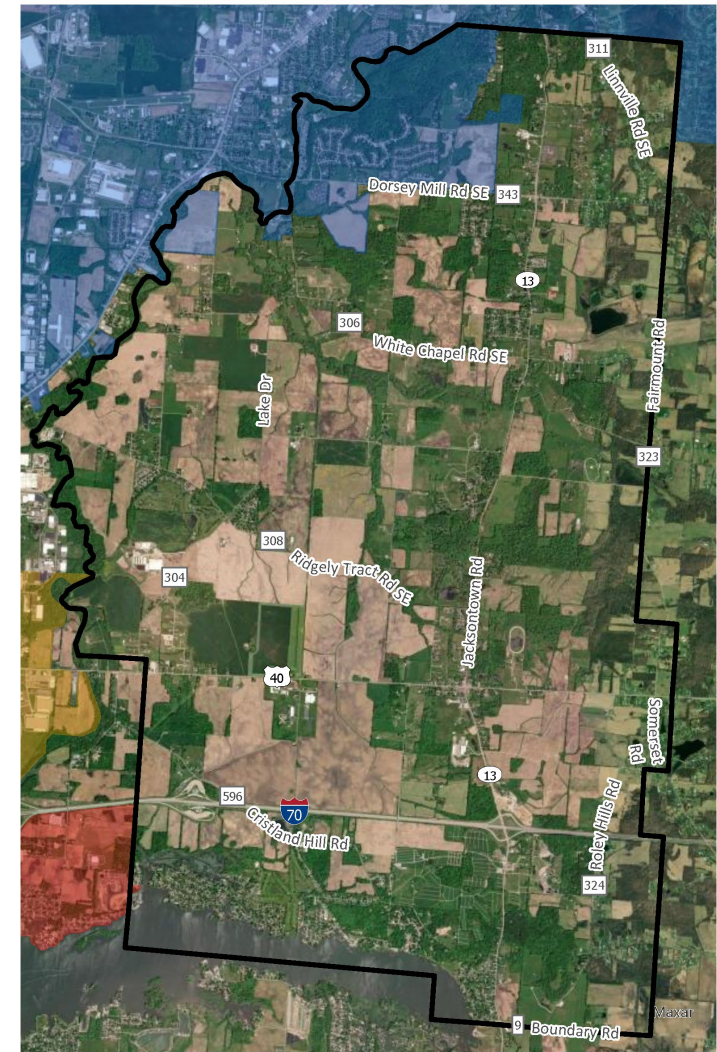
DEVELOPMENT

Q19 Please select the theme(s) that you would prefer, if development were to occur in Licking Township. Feel free to select more than one.



EXISTING CONDITIONS REPORT

Historic Township Borders - Aerial



Municipalities
Buckeye Lake
Heath
Hebron

0 1 2 Miles



Buckeye Lake Regional Corporation (BLRC)

- Almost 40 members, including 5 villages, 3 Townships, and county representatives from Licking, Perry, and Fairfield.
- 2 main focus areas: infrastructure and public spaces.

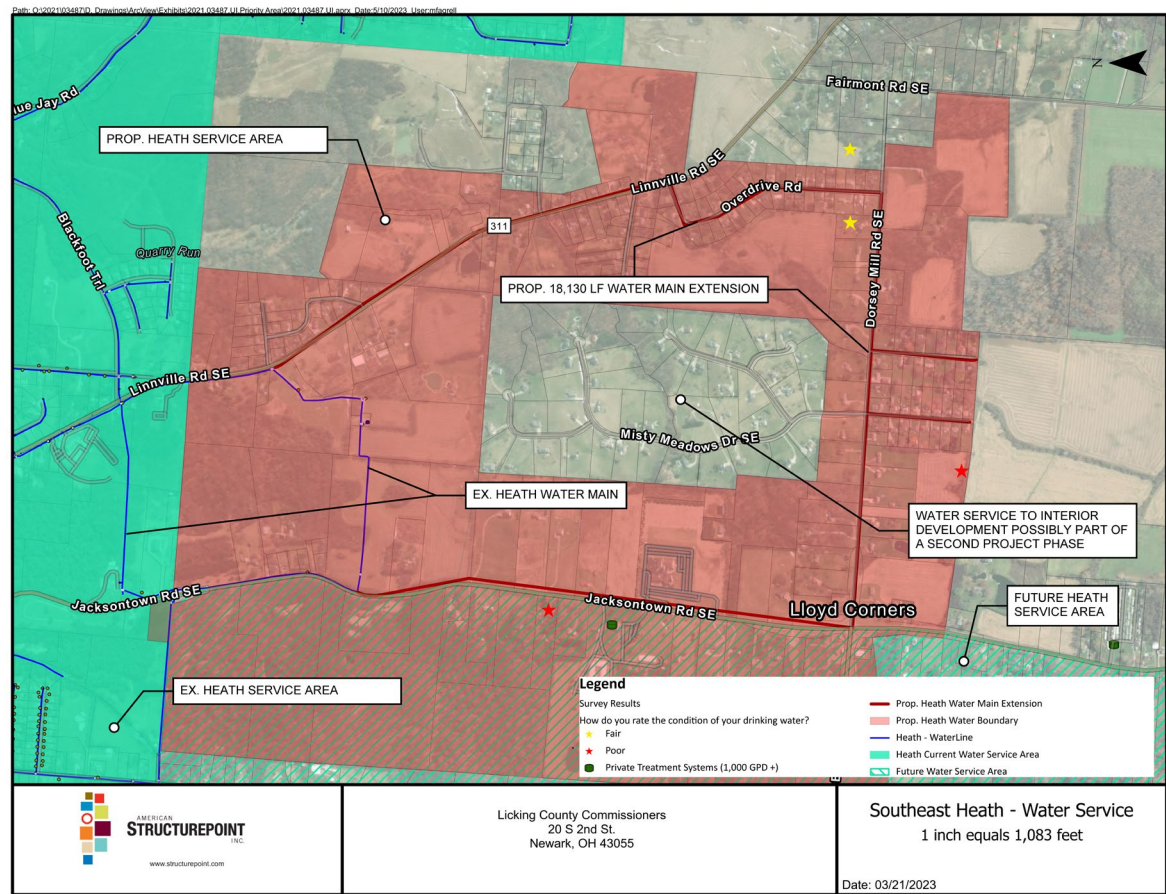
Buckeye Lake for Tomorrow

- Wetland Development for Christland Hill Road.
- Canal bank improvement projects to improve water quality and level of lake.

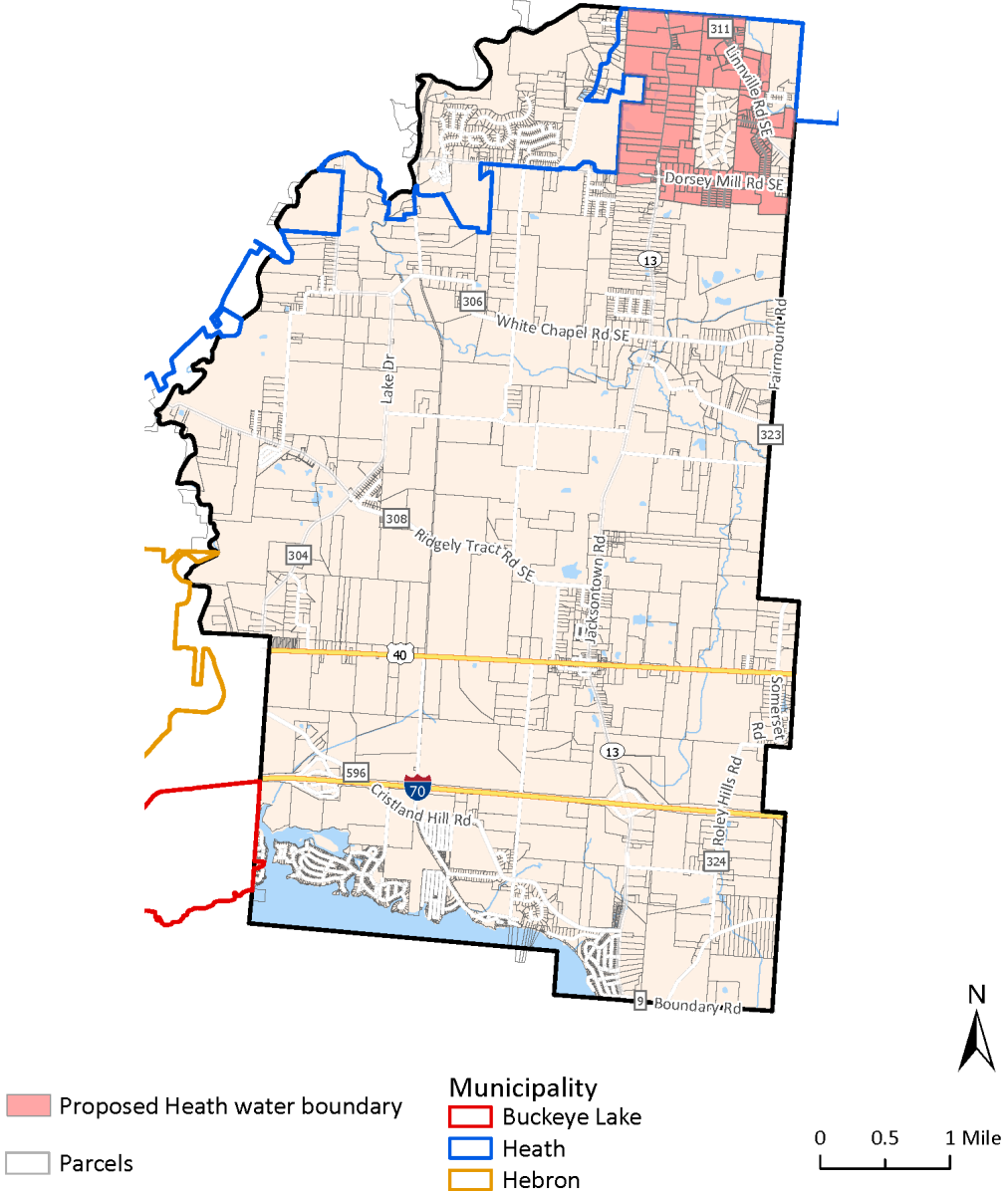


BUCKEYE LAKE AREA

WATER & SEWER INFRASTRUCTURE



Proposed Water Service



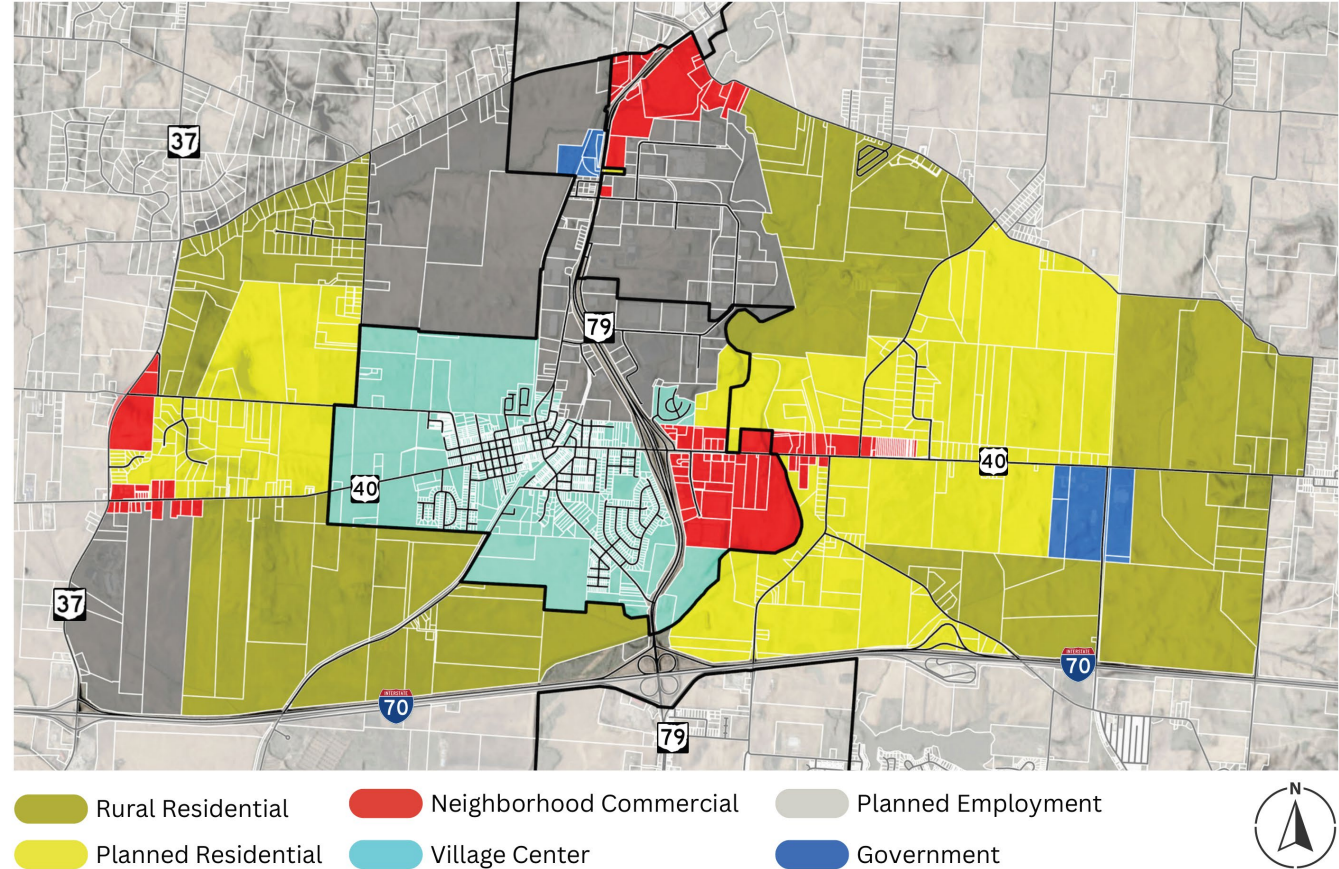
HOUSING

| LOCATION | BIA FORECAST |
|---------------|--------------|
| FRAMEWORK | 61,604 |
| Alexandria | 261 |
| Granville | 1,857 |
| Granville Twp | 3,712 |
| Harrison Twp | 3,081 |
| Heath | 5,278 |
| Hebron | 1,376 |
| Jersey Twp | 1,506 |
| Johnstown | 2,122 |
| Liberty Twp | 953 |
| Monroe Twp | 3,194 |
| Newark | 25,148 |
| Pataskala | 6,830 |
| St Albans Twp | 1,344 |
| Union Twp | 4,942 |

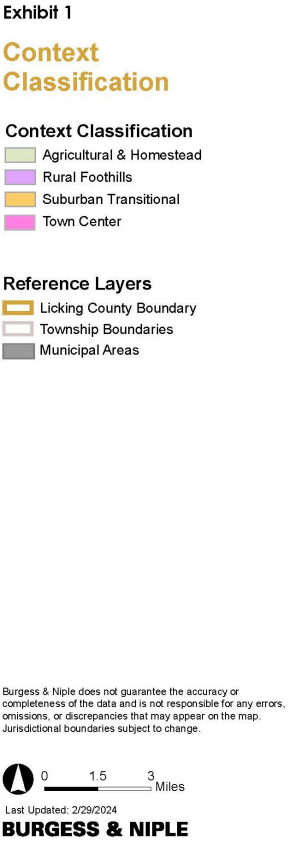
Hebron Future Land Use Map

MAP 4 - FUTURE LAND USE MAP

DRAFT



LICKING COUNTY THOROUGHFARE PLAN





QUESTIONS OR
COMMENTS?

The background of the image is a dense, close-up photograph of green hosta leaves. The leaves are large, heart-shaped, and have prominent veins. They are arranged in a way that creates a textured, layered effect. The lighting is soft, highlighting the natural colors and shapes of the foliage.

GOALS AND ACTION ITEMS BRAINSTORMING

NEXT STEPS

- Crossroads will take today's brainstorming ideas and work them into specific action steps.
- Reconvene with the Steering Committee to bring fully formulated goals back for group feedback.